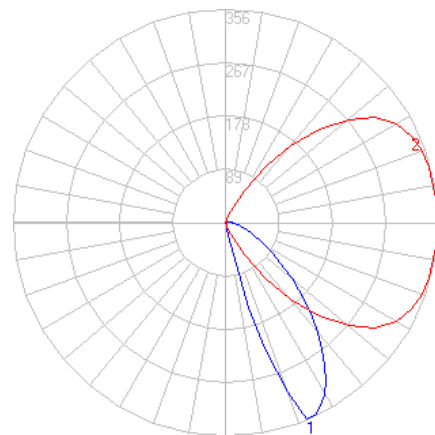


BEGA

Photometric Filename: 22372.ies

TEST: BE_22372
TEST LAB: BEGA
DATE: 10/23/2017
LUMINAIRE: 22 372
LAMP: 7.7W LED



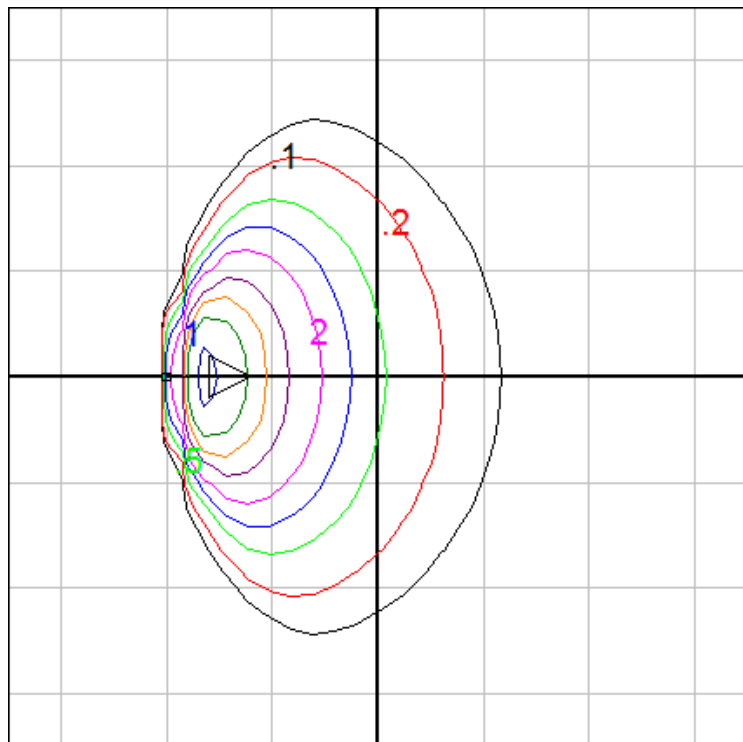
Characteristics

IES Classification	Type II
Longitudinal Classification	Very Short
Lumens Per Lamp	N.A. (absolute)
Total Lamp Lumens	N.A. (absolute)
Luminaire Lumens	241
Downward Total Efficiency	N.A.
Total Luminaire Efficiency	N.A.
Luminaire Efficacy Rating (LER)	22
Total Luminaire Watts	11
Ballast Factor	1.00
Upward Waste Light Ratio	0.01
Max. Cd.	355.724 (0H, 25V)
Max. Cd. (<90 Vert.)	355.724 (0H, 25V)
Max. Cd. (At 90 Deg. Vert.)	10.961 (4.5%Lum)
Max. Cd. (80 to <90 Deg. Vert.)	20.792 (8.6%Lum)
Cutoff Classification (deprecated)	N.A. (absolute)

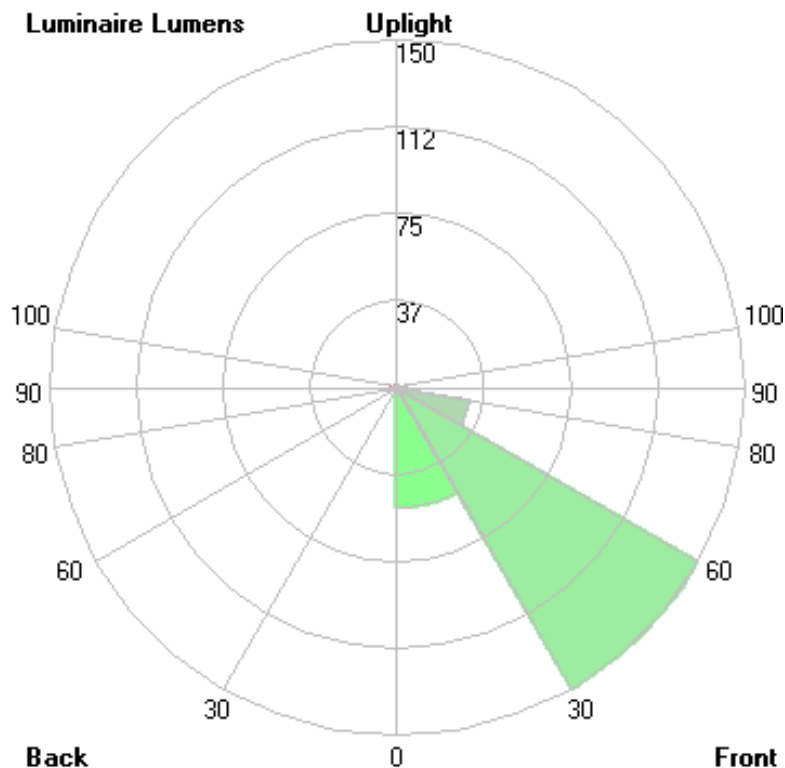
Lum. Classification System (LCS)

LCS Zone	Lumens	%Lamp	%Lum
FL (0-30)	51.8	N.A.	21.5
FM (30-60)	150.0	N.A.	62.3
FH (60-80)	31.8	N.A.	13.2
FVH (80-90)	4.0	N.A.	1.7
BL (0-30)	0.0	N.A.	0.0
BM (30-60)	0.0	N.A.	0.0
BH (60-80)	0.0	N.A.	0.0
BVH (80-90)	0.0	N.A.	0.0
UL (90-100)	1.9	N.A.	0.8
UH (100-180)	1.1	N.A.	0.5
Total	240.6	N.A.	100.0

BUG Rating B0-U1-G0



Mounting Height = 2 ft. Grid Spacing = 2.5 ft.



In the interest of product improvement, BEGA reserves the right to make technical changes without notice.

BEGA 1000 Bega Way, Carpinteria, CA 93013 (805)684-0533 Fax (805)566-9474 www.bega-us.com © Copyright BEGA-US 2017

10/23/2017