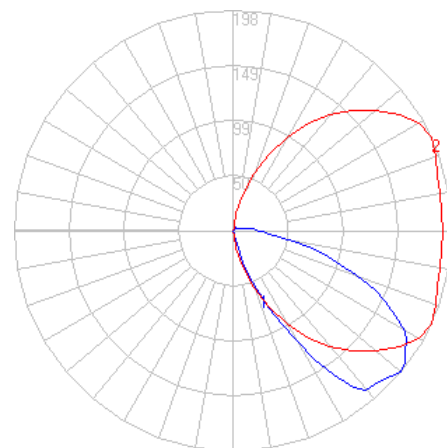


BEGA

Photometric Filename: 22377.IES

TEST: BE_22377
TEST LAB: BEGA
DATE: 9/20/2013
LUMINAIRE: 22 377
LAMP: 3.9W LED



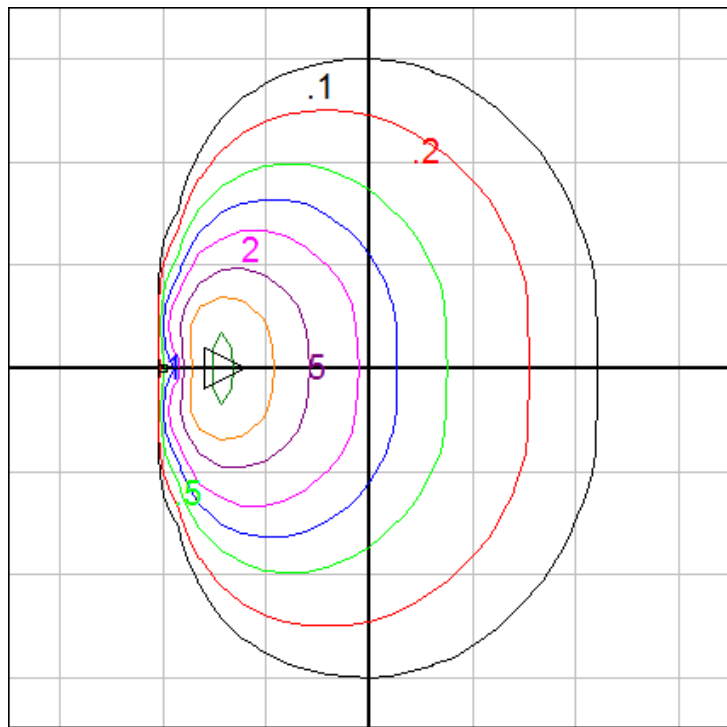
Characteristics

IES Classification	Type IV
Longitudinal Classification	Very Short
Lumens Per Lamp	N.A. (absolute)
Total Lamp Lumens	N.A. (absolute)
Luminaire Lumens	253
Downward Total Efficiency	N.A.
Total Luminaire Efficiency	N.A.
Luminaire Efficacy Rating (LER)	42
Total Luminaire Watts	6
Ballast Factor	1.00
Upward Waste Light Ratio	0.05
Max. Cd.	198.3 (25H, 50V)
Max. Cd. (<90 Vert.)	198.3 (25H, 50V)
Max. Cd. (At 90 Deg. Vert.)	23 (9.1%Lum)
Max. Cd. (80 to <90 Deg. Vert.)	60.4 (23.9%Lum)
Cutoff Classification (deprecated)	N.A. (absolute)

Lum. Classification System (LCS)

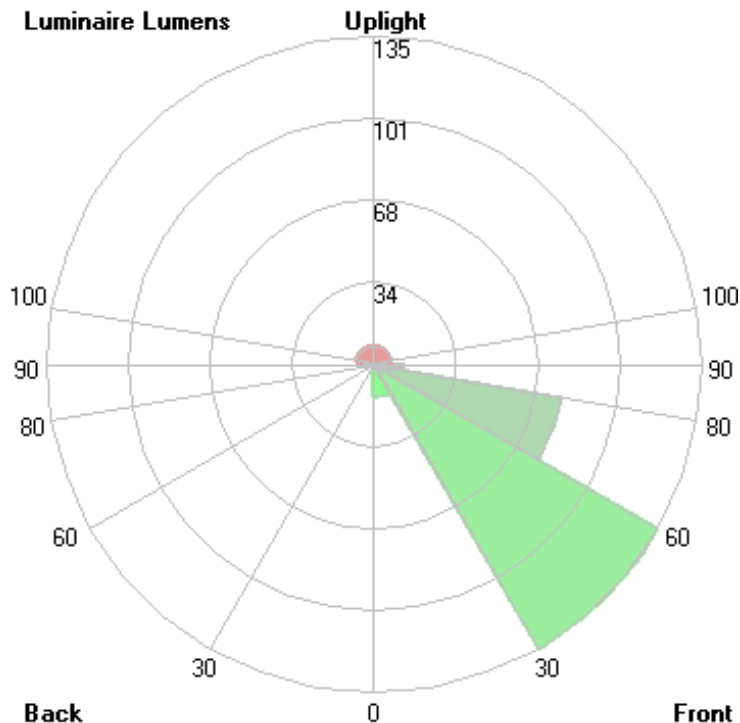
LCS Zone	Lumens	%Lamp	%Lum
FL (0-30)	13.5	N.A.	5.3
FM (30-60)	135.1	N.A.	53.4
FH (60-80)	78.1	N.A.	30.9
FVH (80-90)	12.4	N.A.	4.9
BL (0-30)	0.0	N.A.	0.0
BM (30-60)	0.0	N.A.	0.0
BH (60-80)	0.0	N.A.	0.0
BVH (80-90)	0.0	N.A.	0.0
UL (90-100)	6.4	N.A.	2.5
UH (100-180)	7.4	N.A.	2.9
Total	252.9	N.A.	100.0

BUG Rating B0-U1-G1



Mounting Height = 2 ft. Grid Spacing = 2.5 ft.

Luminaire Lumens



In the interest of product improvement, BEGA reserves the right to make technical changes without notice.

BEGA 1000 Bega Way, Carpinteria, CA 93013 (805)684-0533 Fax (805)566-9474 www.bega-us.com © Copyright BEGA-US 2018

6/25/2018