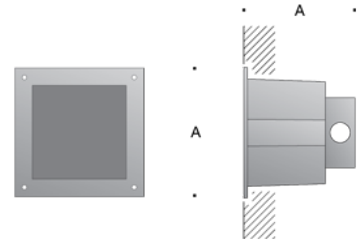


Tools required: Standard medium screwdriver
Philips medium screwdriver

For use with:
BEGA 22 250, 3115, 33 116, 33 117, 22
372, 22 378, OR 22 249

Dimensions

A: 6-1/8 "

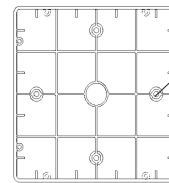


Notice to Installer for 19 522:

This fixture is intended for use in poured concrete. This CPC may be wired with four (4) #12 conductors suitable for 75 °C when used with luminaires 33 115, 33 116, 33 117.

19 522 Installation Instructions:

1. Drill four holes in the form using the indicated holes in Fig.1. Care must be taken to ensure that the support plate is level; failure to do so will result in the fixture not installing level to the grade.
2. Attach the CPC housing to the support plate as shown in Fig. 2 using the provided square nuts.
3. Attach the CPC assemble to the form using the provided 10-24 threaded rod, wing nuts and washers.
4. Connect the conduit and pour concrete.
IMPORTANT NOTE !!! DO NOT PUMP OR DROP CONCRETE DIRECTLY ON TOP OF THE FIXTURE HOUSING. USE CARE IN PLACING CONCRETE AROUND THE FIXTURE HOUSING TO AVOID DISLODGING IT FROM THE FORM
5. Remove the 10-24 wing nuts before removing the form.
6. After the forms have been removed, the inner CPC support plate can be taken out and discarded by removing the four 6-32 screws (see Fig 3). The support plate can be left in place during construction to keep out debris.
7. Using the 18 gauge wires and wire nuts provided, make "jumper" wire connections to the #12 building wire in the CPC junction box. Route the 18 gauge wire through the cover plate and 1/4" IP threaded nipple (Fig. 4). Secure the cover plate to the through wiring box using the two #8 screws provided.
8. Knockout the .875" Dia. Hole in the center of the fixture housing (not shipped with the CPC). Slide the housing over the 18 gauge wire and onto the threaded nipple.
9. Adjust the threaded nipple to that 1/8" or less of the nipple protrudes into the housing body. Lock the housing to the threaded nipple using the jam nut and lock washer provided.
10. Complete the installation of the fixture wiring per the instruction provided with the housing.
11. After wall is finished, caulk between the wall and the luminaire housing (outside flange) using a suitable silicone sealant.



Drill form at these four locations

Fig. 1

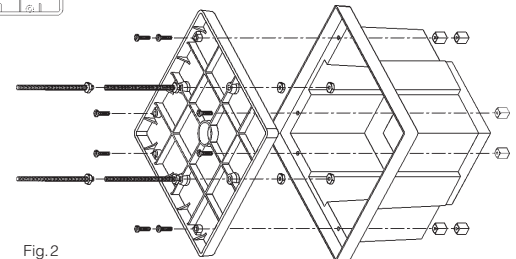


Fig. 2

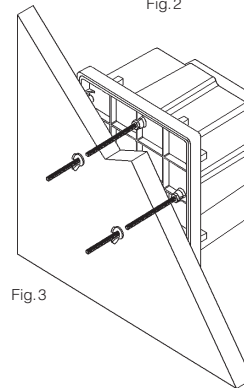


Fig. 3

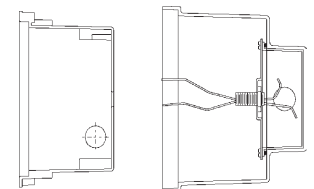


Fig. 4