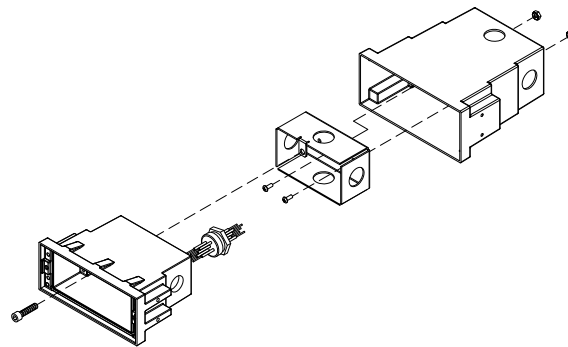


Tools required: Philips medium screw driver
Hex key

For use with:
BEGA 22 130 & 22 135



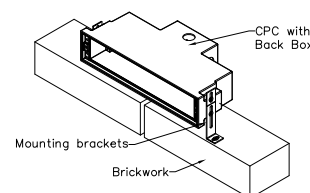
Notice to Installer for 19 535:

- 1. BEGA luminaires may be damaged if connected to conduit systems containing water - Article 300-5G of National Electric Code requires that "Conduits or raceways through which moisture may contact energized live parts shall be sealed or plugged at either or both ends".**
- This fixture is intended for use in poured concrete. This CPC may be wired with four (4) #12 conductors suitable for 70°C
- CPC housing provided with (4) 1/2" NPT holes (horizontal and vertical entry). **IMPORTANT: USE 1/2" NPT FITTING AND TEFLON TAPE AT CONDUIT - BACK HOUSING CONNECTION IN ORDER TO PROPERLY SEAL BACK HOUSING.**
- CPC housing MUST be installed so that the front face is flush with or slightly protruded from the finished wall. Failure to do so will result in the faceplate not sealing properly, and will void the BEGA warranty.**
NOTE: FRONT EDGE OF CPC HOUSING WILL BE VISIBLE AROUND LUMINAIRE FACE PLATE AFTER INSTALLATION IS COMPLETED.
- Suitable for wall applications only. (No ceiling and in-grade applications.)
- The front face of the housing is a gasket sealing surface; care must be taken to ensure that this surface remains clean and free of debris.
- Back box casting can be adjusted in or out of the CPC by loosening or tightening the screw in the rear of the box.

19 535 installation in brick wall construction:

- Remove splatter guard, retain for later use and keep inner cast aluminum back housing in place during installation of CPC.
- Install the (2) adjustable mounting brackets provided as shown in Figure 1, using the (4) 8-32 screws provided.
- Adjust the brackets vertically for optimal gap spaces between upper and lower brick surfaces and back housing
- Orient fixture housing as directed on label. Failure to do so will result in faceplate not installing properly. See Notice to Installer #4.
- Secure the mounting brackets to the top of the brick (hardware by others) so that the front face of the back box will be flush or slightly in front of the finished wall surface after installation.
- Connect conduit to CPC housing using 1/2" NPT fitting with teflon tape on conduit or backhousing threads. Pull wires into CPC housing for electrical connections to be made later.
- Reinstall splatter guard and finish wall.
- Before continuing with the installation of the lens assembly, remove splatter guard and debris from sealing surface.
- Make "jumper" wire connections to the building wiring in the CPC junction box.
- Place a small bead of silicone between edge of housing and wall to provide a seal.
- Complete the installation of the fixture per the instruction provided.

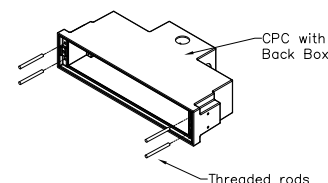
**Figure 1
(brick wall)**



19 535 installation in poured concrete construction:

- Remove splatter guard, retain for later use and keep inner cast aluminum back housing in place during installation of CPC.
- Install (4) threaded 10-24 rods (supplied) in face of the back housing. Hand tighten until secure (See Figures 2).
- Attach back housing to form using (4) wing nuts provided so that the front face of the back housing will be flush or slightly in front of the finished surface.
- Orient fixture housing as directed on label. Failure to do so will result in faceplate not installing properly. See Notice to Installer #4.
- Connect conduit to CPC housing using 1/2" NPT fitting with teflon tape on conduit or back housing threads. Pull wires into CPC housing for electrical connections to be made later.
- Pour concrete. **NOTE: DO NOT PUMP OR DROP CONCRETE DIRECTLY ON TOP OF THE CPC HOUSING.**
- Remove the wing nuts and threaded rods before removing form. **IMPORTANT: FULLY UNTHREAD AND REMOVE MOUNTING RODS FROM BACK HOUSING. DO NOT CUT OR SHEAR MOUNTING RODS AS THIS MAY COMPROMISE FACEPLATE SEAL TO THE BACK HOUSING.**
- Reinstall splatter guard to protect during construction.
- Before continuing the installation of the lens assembly with, remove splatter guard and debris from sealing surface.
- Make "jumper" wire connections to the building wiring in the CPC junction box.
- Place a small bead of silicone between edge of housing and wall to provide a watertight seal.
- Complete the installation of the fixture per the instruction provided.

Figure 2 (poured concrete)



In the interest of product improvement, BEGA reserves the right to make technical changes without notice.