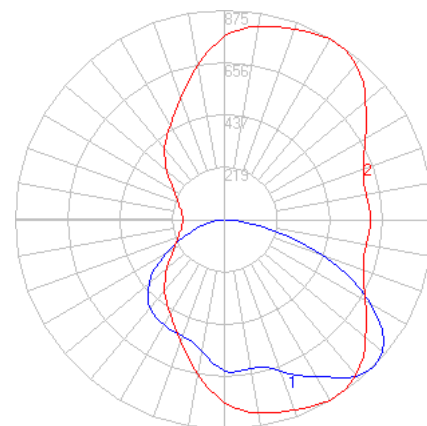


BEGA

Photometric Filename: 22383.IES

TEST: BE_22383
TEST LAB: BEGA
DATE: 4/25/2016
LUMINAIRE: 22 383
LAMP: 15.8W LED



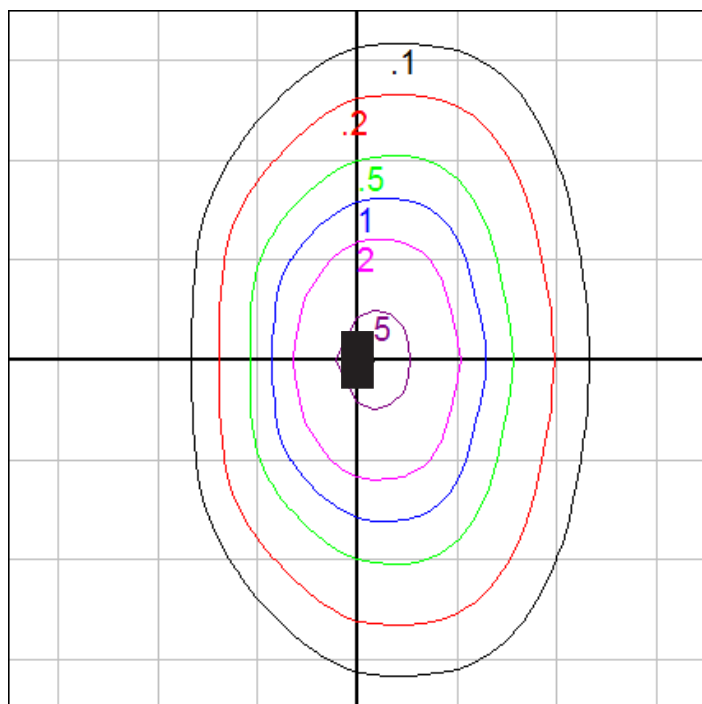
Characteristics

IES Classification	Type II
Longitudinal Classification	Very Short
Lumens Per Lamp	N.A. (absolute)
Total Lamp Lumens	N.A. (absolute)
Luminaire Lumens	2187
Downward Total Efficiency	N.A.
Total Luminaire Efficiency	N.A.
Luminaire Efficacy Rating (LER)	104
Total Luminaire Watts	21
Ballast Factor	1.00
Upward Waste Light Ratio	0.00
Max. Cd.	874.7 (300H, 45V)
Max. Cd. (<90 Vert.)	874.7 (300H, 45V)
Max. Cd. (At 90 Deg. Vert.)	0 (0.0%Lum)
Max. Cd. (80 to <90 Deg. Vert.)	168.4 (7.7%Lum)
Cutoff Classification (deprecated)	N.A. (absolute)

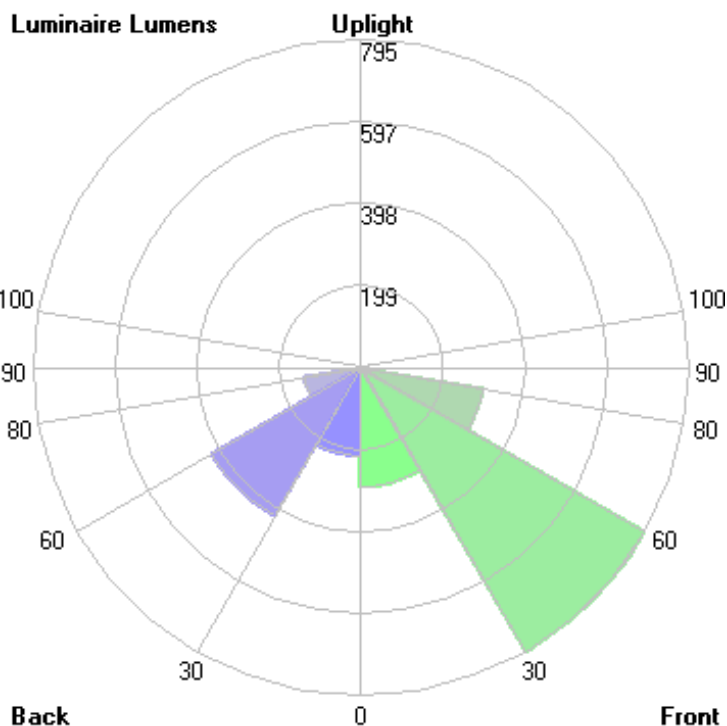
Lum. Classification System (LCS)

LCS Zone	Lumens	%Lamp	%Lum
FL (0-30)	289.2	N.A.	13.2
FM (30-60)	795.4	N.A.	36.4
FH (60-80)	301.0	N.A.	13.8
FVH (80-90)	20.5	N.A.	0.9
BL (0-30)	215.1	N.A.	9.8
BM (30-60)	416.9	N.A.	19.1
BH (60-80)	138.3	N.A.	6.3
BVH (80-90)	10.1	N.A.	0.5
UL (90-100)	0.0	N.A.	0.0
UH (100-180)	0.0	N.A.	0.0
Total	2186.5	N.A.	100.0

BUG Rating B1-U0-G1



Mounting Height = 10 ft. Grid Spacing = 10 ft.

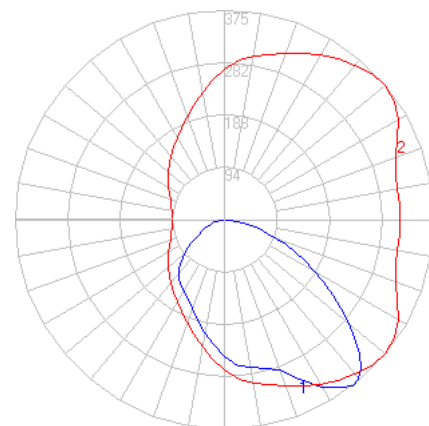


In the interest of product improvement, BEGA reserves the right to make technical changes without notice.

BEGA

Photometric Filename: 22383AMB.IES

TEST: L091913001
TEST LAB: LIGHT LABORATORY, INC.
DATE: 9/24/2019
LUMINAIRE: 22 383 Amber
LAMP: 29.4W LED



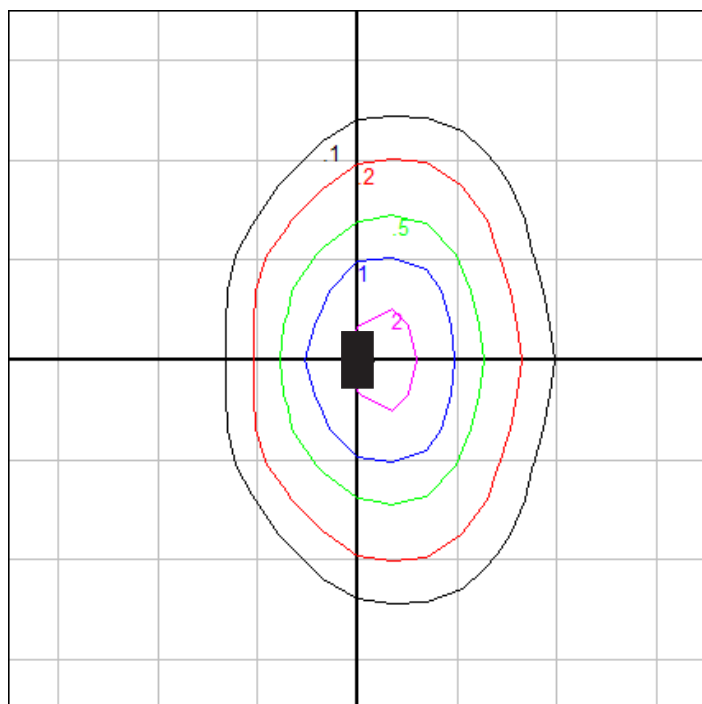
Characteristics

IES Classification	Type II
Longitudinal Classification	Very Short
Lumens Per Lamp	N.A. (absolute)
Total Lamp Lumens	N.A. (absolute)
Luminaire Lumens	851
Downward Total Efficiency	N.A.
Total Luminaire Efficiency	N.A.
Luminaire Efficacy Rating (LER)	25
Total Luminaire Watts	34.61
Ballast Factor	1.00
Upward Waste Light Ratio	0.00
Max. Cd.	375.34 (40H, 37.5V)
Max. Cd. (<90 Vert.)	375.34 (40H, 37.5V)
Max. Cd. (At 90 Deg. Vert.)	0 (0.0%Lum)
Max. Cd. (80 to <90 Deg. Vert.)	61.82 (7.3%Lum)
Cutoff Classification (deprecated)	N.A. (absolute)

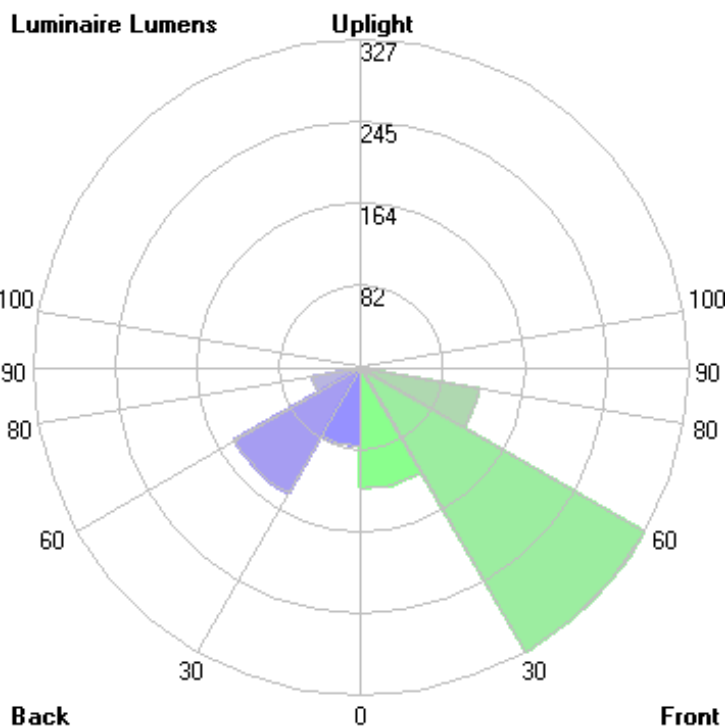
Lum. Classification System (LCS)

LCS Zone	Lumens	%Lamp	%Lum
FL (0-30)	120.2	N.A.	14.1
FM (30-60)	327.1	N.A.	38.4
FH (60-80)	119.4	N.A.	14.0
FVH(80-90)	8.2	N.A.	1.0
BL (0-30)	78.4	N.A.	9.2
BM (30-60)	145.6	N.A.	17.1
BH (60-80)	48.7	N.A.	5.7
BVH(80-90)	3.7	N.A.	0.4
UL (90-100)	0.0	N.A.	0.0
UH (100-180)	0.0	N.A.	0.0
Total	851.3	N.A.	100.0

BUG Rating B0-U0-G0



Mounting Height = 10 ft. Grid Spacing = 10 ft.



In the interest of product improvement, BEGA reserves the right to make technical changes without notice.

BEGA 1000 Bega Way, Carpinteria, CA 93013 (805)684-0533 Fax (805)566-9474 www.bega-us.com © Copyright BEGA-US 2019

10/24/2019