

Tools Required:

- Hex key
- Philips medium screwdriver



- Dimensions**
- A: 23-5/8 "
 - B: 2-3/4 "
 - C: 4-1/8 "



Notice to Installer for 23 253:

- See page 2 for specific product safety warnings.
- Select the desired trim ring or housing material finish by using appropriate code number as suffix.
 - Code number .1 - White
 - Code number .2 - Stainless steel
 - Code number .3 - Chrome
- For attachment to wall over separate small opening linear wiring box (19537 provided by BEGA).
- Wiring box needs to be recessed into wall and must be flush with the finished surface.
- LEDs are high-quality electronic components! Please avoid touching them directly during installation.
- A minimum clearance of 12" from end of fixture is required for installation and maintenance.

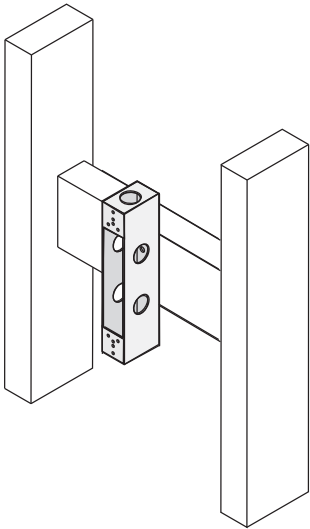
19537 - wiring box installation:

Hollow (stud) wall construction - Secure wiring box to wood or metal horizontal blocking as shown in the submittal drawings. Connect conduit to wiring box (if needed) and pull wires for electrical connections to be made later.

Poured concrete construction - Attach wiring box to the concrete form. Connect conduit to wiring box (if needed) and pull wires for electrical connections to be made later. Pour concrete and remove form.

IMPORTANT: Do not pour concrete directly on to box!

Figure 1 (Generic Image)



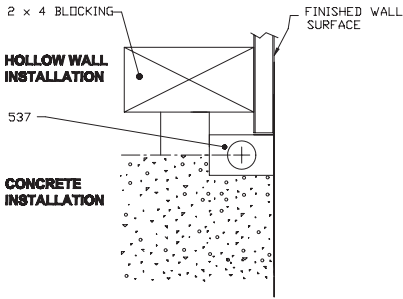
23 253 - installation:

- Unscrew glass lens from luminaire base.
- Make supply wiring connections inside the linear wiring box:
 - MAIN VOLTAGE SUPPLY WIRE TO BLACK LUMINAIRE WIRE
 - NEUTRAL (COMMON) SUPPLY WIRE TO WHITE LUMINAIRE WIRE
 - GREEN GROUND WIRE TO GREEN LUMINAIRE WIRE.

Dimming (if applicable):

- DIMMING CONTROL WIRE (+) TO POSITIVE DRIVER DIM CONTROL WIRE
 - DIMMING CONTROL WIRE (-) TO NEGATIVE DRIVER DIM CONTROL WIRE
- Attach the luminaire base directly to wall over box using hardware (by others) and secure by tightening set screw.
 - Replace lens.

Figure 2 (Generic Image)



Relamping/Maintenance

Unscrew lens from luminaire base. Clean glass and luminaire using only solvent-free cleansers. Replace lens. No relamping necessary.

Accessories

Please refer to the appropriate accessory installation sheet for further instruction when applicable.

Linear wiring box 19537

Replacement Parts

Description	Part No
Diffuser	112947
Driver (120-277V)	75990
LED Module (3000K)	LED-0425/930
	LED-0424/930
LED Module (4000K)	LED-0425/940
	LED-0424/940

Lamp: 10.7W LED

Product Safety Warnings:

THIS PRODUCT MUST BE INSTALLED IN ACCORDANCE WITH THE APPLICABLE INSTALLATION CODE BY A PERSON FAMILIAR WITH THE CONSTRUCTION AND OPERATION OF THE PRODUCT AND THE HAZARDS INVOLVED. SUITABLE FOR DAMP LOCATIONS.

MIN 90°C SUPPLY CONDUCTORS.

CE PRODUIT DOIT ÊTRE INSTALLÉ SELON LE CODE D'INSTALLATION PERTINENT, PAR UNE PERSONNE QUI CONNAÎT BIEN LE PRODUIT ET SON FONCTIONNEMENT AINSI QUE LES RISQUES INHÉRENTS. CONVIENT AUX EMPLACEMENTS HUMIDES.

LES FILS D'ALIMENTATION 90°C MIN.
