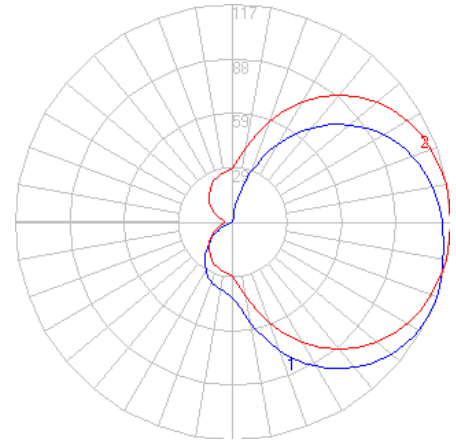


# BEGA

Photometric Filename: 33508.ies

TEST: BE\_33508  
TEST LAB: BEGA  
DATE: 7/6/2017  
LUMINAIRE: 33 508  
LAMP: 4.7W LED

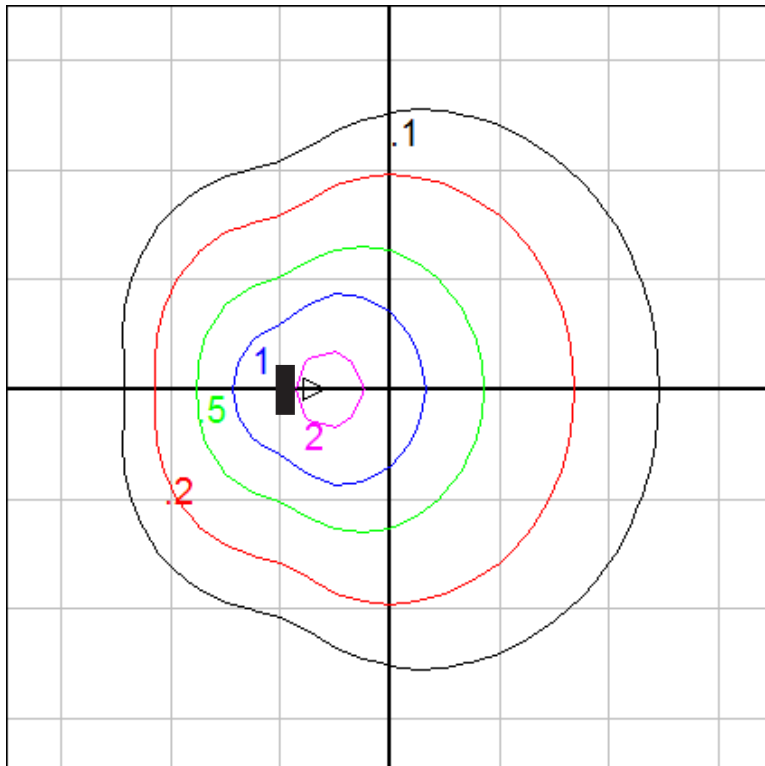


## Characteristics

Lumens Per Lamp	N.A. (absolute)
Total Lamp Lumens	N.A. (absolute)
Luminaire Lumens	505
Total Luminaire Efficiency	N.A.
Luminaire Efficacy Rating (LER)	72
Total Luminaire Watts	7
Ballast Factor	1.00
CIE Type	Semi-Direct
Spacing Criterion (0-180)	2.94
Spacing Criterion (90-270)	1.46
Spacing Criterion (Diagonal)	2.10
Basic Luminous Shape	Rectangular w/Sides
Luminous Length (0-180)	0.21 ft
Luminous Width (90-270)	0.62 ft
Luminous Height	0.62 ft

## Zonal Lumen Summary

Zone	Lumens
0-10	4.06
10-20	13.12
20-30	23.22
30-40	33.16
40-50	41.78
50-60	48.18
60-70	51.83
70-80	52.71
80-90	51.22
90-100	47.52
100-110	41.82
110-120	34.54
120-130	26.34
130-140	18.10
140-150	10.73
150-160	5.03
160-170	1.45
170-180	0.10



Wall Mount Fixture - Isofootcandle Grid on Floor  
Mounting Height = 5 ft. Grid Spacing = 5 ft.

In the interest of product improvement, BEGA reserves the right to make technical changes without notice.

**BEGA** 1000 Bega Way, Carpinteria, CA 93013 (805)684-0533 Fax (805)566-9474 [www.bega-us.com](http://www.bega-us.com) © Copyright BEGA-US 2018

4/4/2018