

LED pole-top luminaires - Twin outrigger arm - Asymmetrical flat beam light distribution

BEGA

Application

LED twin pole-top luminaire with outrigger arm with asymmetrical flat beam light distribution designed for the illumination of parking areas and roadways. Tool-less entry with hinged door for ease of maintenance. Provided with slip fitter to fit 3" O.D. poles.

Materials

Luminaire housing, outrigger arm, and pole fitter constructed of die-cast marine grade, copper free ($\leq 0.3\%$ copper content) A360.0 aluminum alloy
Clear safety glass with anti-reflective coating for increased transmission
Reflector made of pure anodized aluminum
Silicone applied robotically to casting, plasma treated for increased adhesion
High temperature silicone gasket
Mechanically captive stainless steel fasteners

NRTL listed to North American Standards, suitable for wet locations
Protection class IP 66

Weight: 42.8 lbs.

EPA (Effective projection area): 2.3 sq. ft.

Electrical

Operating voltage 120-277V AC
Minimum start temperature -30°C
LED module wattage (2) 31.4 W
System wattage 62.8 W
Controllability 0-10V, TRIAC, and ELV dimmable
Color rendering index $R_a > 80$
Luminaire lumens 9,110 lumens (3000K)
LED service life (L70) 60,000 hours

LED color temperature

4000K - Product number + **K4**
3500K - Product number + **K35**
3000K - Product number + **K3**
2700K - Product number + **K27**
Amber - Product number + **AMB**

Wildlife friendly amber LED - Optional

Luminaire is optionally available with a narrow bandwidth, amber LED source (585-600nm) approved by the FWC. This light output is suggested for use within close proximity to sea turtle nesting and hatching habitats. Electrical and control information may vary from standard luminaire.

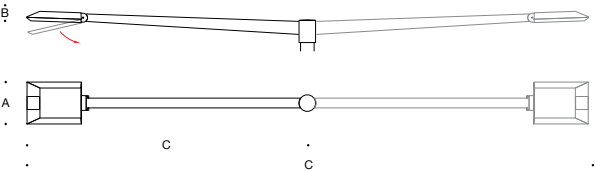
LED module wattage (2) 35.2 W (Amber)
System wattage 82.2 W (Amber)
Luminaire lumens 2,570 lumens (Amber)

BEGA can supply you with suitable LED replacement modules for up to 20 years after the purchase of LED luminaires - see website for details

Finish

All BEGA standard finishes are matte, textured polyester powder coat with minimum 3 mil thickness.

Available colors Black (BLK) White (WHT) RAL:
 Bronze (BRZ) Silver (SLV) CUS:



Twin pole-top luminaire with outrigger arm - Asymmetrical flat beam

	LED	A	B	C
77 736	(2) 31.4 W	10	2 3/8	134

Recommended for use with 25' to 30' poles

BEGA 1000 BEGA Way, Carpinteria, CA 93013 (805) 684-0533 info@bega-us.com

Due to the dynamic nature of lighting products and the associated technologies, luminaire data on this sheet is subject to change at the discretion of BEGA North America. For the most current technical data, please refer to bega-us.com
© copyright BEGA 2019 Updated 08/06/19

Type:
BEGA Product:
Project:
Modified:

