

LED drive-over in-grade aimable floodlights for high-pressure loads

**Outer housing:** Constructed of high tensile strength stainless steel.

**Inner housing:** Constructed of high tensile strength, cast stainless steel. Trim ring is heavy gauge, machined stainless steel secured to inner housing with stainless steel fasteners threaded into stainless steel threads. Tempered clear safety glass is 1/2" thick and machined flush to trim ring. Weather tight operation achieved through the use of molded high temperature silicone gasket. Inner housing fits into outer housing to be flush with finished surface.

**Adjustable optical assembly:** Consists of an anodized aluminum reflector and tempered crystal glass lens. Spread lenses and concentric ring louvers may be added as available options. Precise aiming is achieved by adjusting reflector assembly 180° horizontal and up to 30° vertical in 5° increments and locking in place with internal set screw.

**Electrical:** 29.0W LED luminaire, 33.5 total system watts, -30°C start temperature. Integral 120V through 277V electronic LED driver, 0-10V dimming. LED module(s) are available from factory for easy replacement. Standard LED color temperature is 4000K with a >80 CRI. Available in 3000K (>80 CRI); add suffix K3 to order. Pre-wired with nine (9) feet of waterproof cable, cable clamp, and waterproof cable gland entry into housing. A separate waterproof wiring box for supply power must be provided (by others).

**Note:** LEDs supplied with luminaire. Due to the dynamic nature of LED technology, LED luminaire data on this sheet is subject to change at the discretion of BEGA-US. For the most current technical data, please refer to [www.bega-us.com](http://www.bega-us.com).

**Finish:** Machined #4 stainless steel. Custom colors are not available.

**Optics:** Adjustable 0-30° swivel-mounted in 3° steps and ± 180° infinitely rotatable.

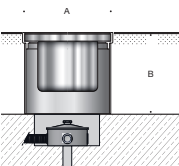
**Temperature caution:** The column 'T' in this chart indicates the temperature in degrees Celsius which is reached on the center of the glass surface during operation. Surface temperatures are for exterior applications, for interior applications add 10° C to temperatures shown.





**Note:** A foundation and proper drainage must be supplied by the customer. These luminaires are designed to bear pressure loads up to 11,000 lbs. from vehicles with pneumatic tires. The luminaires must not be used for traffic lanes where they are subject to horizontal pressure from vehicles braking, accelerating and changing direction

**CSA certified** to U.S. and Canadian standards, suitable for wet locations. Protection class IP68

**Weight:** 37.5 lbs.

Luminaire Lumens: 1515



Adjustable floodlights - clear safety glass					Accessories	
Lamp	b	T	A	B		
77852 29.0W LED	15°	45°	13	10	10048	10019
Diffuser lenses  wide beam  flat beam					b=Beam angle	

Type:  
BEGA Product:  
Project:  
Voltage:  
Color:  
Options:  
Modified:

