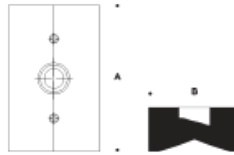


Tools Required:

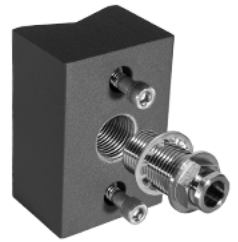
3mm hex key
5mm hex key
Standard small screwdriver



Dimensions

A: 3"

B: 2"



Weight: 1.3 lbs.

Accessory 79 511:

Figure 1

Material: Mounting block made of aluminum alloy.

Notice to the installer for 79 511 Accessory:

1. For use with floodlight equipped with 1/2" I.P.S. nipple.
2. This product must be installed in accordance with the applicable installation code by a person familiar with the construction and operation of the product and the hazards involved.
3. If mounting to a pole supplied by BEGA, the pole will be supplied with threaded stainless steel inserts ready for installation.

NOTE: For all other mounting locations a suitable threaded inserts are required for proper installation.

Accessory 79 511 - installation:

1. Attach mounting block to mounting surface using 5mm hex head mounting hardware (supplied by BEGA).

NOTE: Be sure that the mounting surface has sufficient load capacity to support the floodlight and accessory.

2. Route floodlight cable through threaded drilling in mounting block to splicing location.
3. Attach 1/2" I.P.S. nipple equipped floodlight to arm by screwing mounting bush into female thread on arm.
4. Secure floodlight by tightening the 3mm hex head screw in the splice compartment.
5. Make supply wiring and luminaire wiring connections:

MAIN VOLTAGE SUPPLY WIRE TO BLACK LUMINAIRE WIRE
NEUTRAL (COMMON) SUPPLY WIRE TO WHITE LUMINAIRE WIRE
WIRE GREEN GROUND WIRE TO GREEN LUMINAIRE WIRE

Dimming (if applicable):

DIMMING CONTROL WIRE (+) TO POSITIVE DRIVER DIM CONTROL WIRE
DIMMING CONTROL WIRE (-) TO NEGATIVE DRIVER DIM CONTROL WIRE