

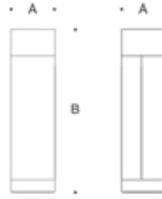
**Tools Required:**

4mm hex key  
1/4" masonry/concrete drill bit  
Drill

CSA certified to U.S. and Canadian standards.  
Suitable for wet locations.

**Protection Class:** IP65

**Weight:** 6.2 lbs.



**Dimensions**

**A:** 4-3/8 "

**B:** 19-3/4 "



**Notice to Installer for 88 500:**

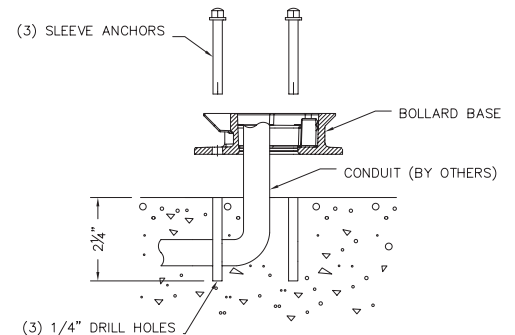
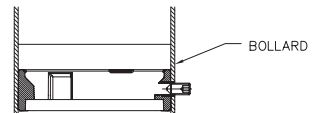
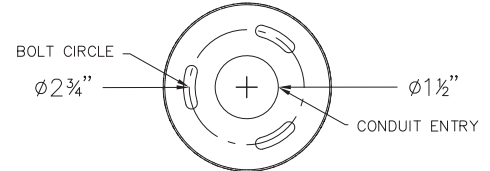
1. Fixture may be damaged if connected to conduit systems that contain water. Article 300-5G of the National Electric Code requires that "Conduits or raceways through which moisture may contact energized live parts shall be sealed or plugged at either or both ends."
2. It is recommended that when installing in planting areas the base of the bollard be slightly elevated to avoid prolonged submerging during heavy rains.
3. Wet location listing does not imply suitability for exposure to standing water for long periods of time.
4. 79 824 anchorage kit is installed AFTER concrete pouring. There is no anchorage installation required during concrete pouring.
5. LEDs are high-quality electronic components! Please avoid touching the light output opening of the LED directly during installation.

**79 824 anchorage installation:**

1. Provide means to bring supply wiring to the pillar in accordance with local code and pour concrete for finished grade. The pillar mounting plate has a 1 1/2" conduit hole for conduit entry.
2. Loosen set screw at pillar base and remove mounting plate.
3. After establishing finished grade, mark the location of the (3) anchorage drill holes using the mounting plate of the fixture as a template.
4. Drill (3) 1/4" holes in concrete at the marked locations.
5. Align mounting plate holes with drill holes.
6. Drive the sleeve anchors through the mounting plate and into the drilled holes until seated flush.

**88 500 - installation:**

1. Feed luminaire wires through mounting plate and conduit, if necessary.
2. Make supply wiring and luminaire wiring connections in the wiring box:  
MAIN VOLTAGE SUPPLY WIRE TO BLACK LUMINAIRE WIRE  
NEUTRAL (COMMON) SUPPLY WIRE TO WHITE LUMINAIRE WIRE  
GREEN GROUND WIRE TO GREEN LUMINAIRE WIRE  
Dimming (if applicable):  
DIMMING CONTROL WIRE (+) TO POSITIVE DRIVER DIM CONTROL WIRE  
DIMMING CONTROL WIRE (-) TO NEGATIVE DRIVER DIM CONTROL WIRE
3. Secure the bollard by tightening the 4mm set screw at the base.



**Relamping/Maintenance**

No relamping required.

**Accessories**

Please refer to the appropriate accessory installation sheet for further instruction when applicable.

Anchor Kit 79 824

**Replacement Parts**

Description	Part No
Lens (consult factory)	140747
Lens gasket	831162
Driver	76023
LED (3000K)	LED-0234/930
LED (4000K)	LED-0234/940

**Lamp:** 4.2W LED