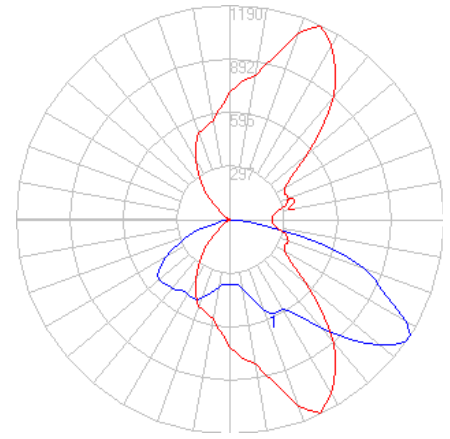


BEGA

Photometric Filename: 99426.IES

TEST: BE_99491
TEST LAB: BEGA
DATE: 8/23/2016
LUMINAIRE: 99 426
LAMP: 15.8W LED



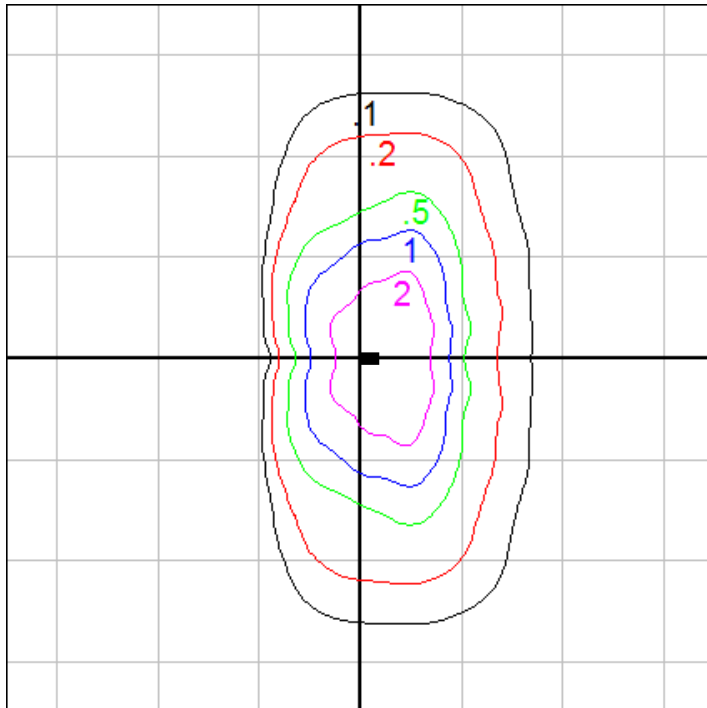
Characteristics

IES Classification	Type II
Longitudinal Classification	Short
Lumens Per Lamp	N.A. (absolute)
Total Lamp Lumens	N.A. (absolute)
Luminaire Lumens	2201
Downward Total Efficiency	N.A.
Total Luminaire Efficiency	N.A.
Luminaire Efficacy Rating (LER)	116
Total Luminaire Watts	19
Ballast Factor	1.00
Upward Waste Light Ratio	0.00
Max. Cd.	1189.5 (295H, 57.5V)
Max. Cd. (<90 Vert.)	1189.5 (295H, 57.5V)
Max. Cd. (At 90 Deg. Vert.)	0 (0.0%Lum)
Max. Cd. (80 to <90 Deg. Vert.)	227.9 (10.4%Lum)
Cutoff Classification (deprecated)	N.A. (absolute)

Lum. Classification System (LCS)

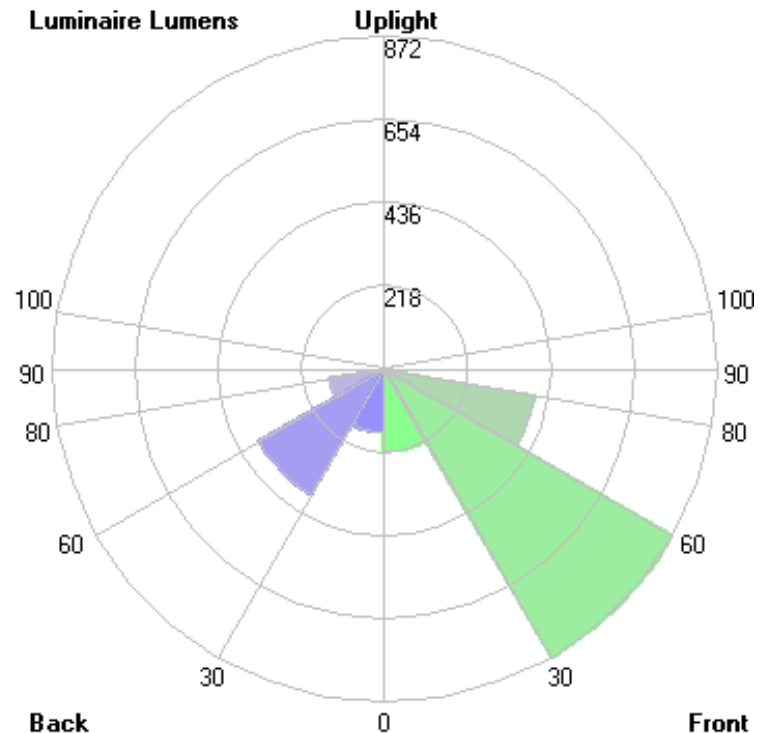
LCS Zone	Lumens	%Lamp	%Lum
FL (0-30)	216.1	N.A.	9.8
FM (30-60)	871.7	N.A.	39.6
FH (60-80)	399.8	N.A.	18.2
FVH (80-90)	17.5	N.A.	0.8
BL (0-30)	167.6	N.A.	7.6
BM (30-60)	379.4	N.A.	17.2
BH (60-80)	144.5	N.A.	6.6
BVH (80-90)	4.6	N.A.	0.2
UL (90-100)	0.0	N.A.	0.0
UH (100-180)	0.0	N.A.	0.0
Total	2201.2	N.A.	100.0

BUG Rating B1-U0-G1



Mounting Height = 12 ft.

Grid Spacing = 15 ft.



In the interest of product improvement, BEGA reserves the right to make technical changes without notice.

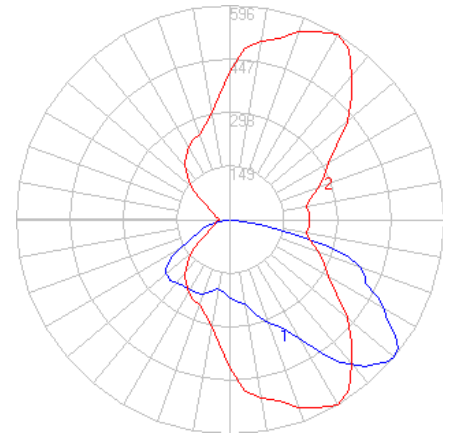
BEGA 1000 Bega Way, Carpinteria, CA 93013 (805)684-0533 Fax (805)566-9474 www.bega-us.com © Copyright BEGA-US 2019

8/13/2019

BEGA

Photometric Filename: 99426AMB.IES

TEST: L061914304
TEST LAB: LIGHT LABORATORY, INC.
DATE: 7/17/2019
LUMINAIRE: 99 426 Amber
LAMP: 29.4W LED



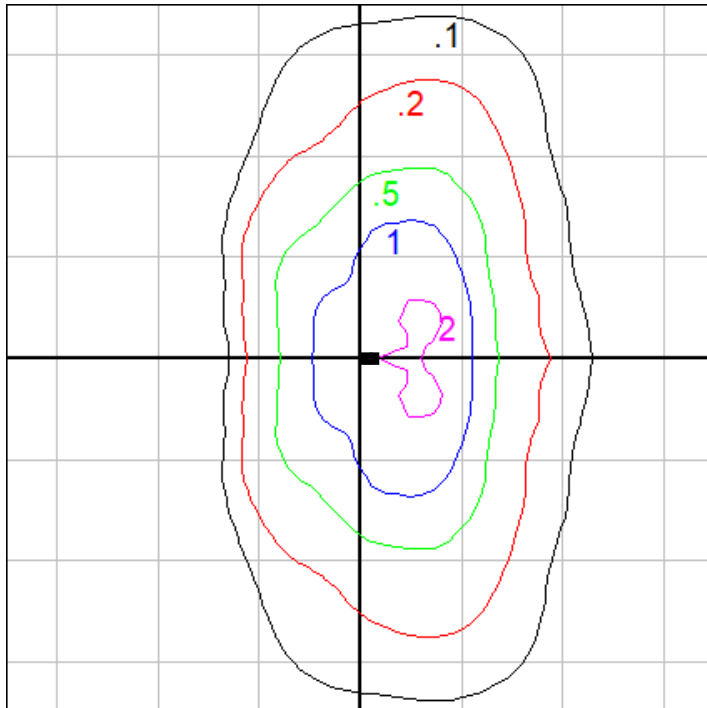
Characteristics

IES Classification	Type II
Longitudinal Classification	Short
Lumens Per Lamp	N.A. (absolute)
Total Lamp Lumens	N.A. (absolute)
Luminaire Lumens	1199
Downward Total Efficiency	N.A.
Total Luminaire Efficiency	N.A.
Luminaire Efficacy Rating (LER)	35
Total Luminaire Watts	34.75
Ballast Factor	1.00
Upward Waste Light Ratio	0.00
Max. Cd.	596.33 (60H, 50V)
Max. Cd. (<90 Vert.)	596.33 (60H, 50V)
Max. Cd. (At 90 Deg. Vert.)	0 (0.0%Lum)
Max. Cd. (80 to <90 Deg. Vert.)	86.09 (7.2%Lum)
Cutoff Classification (deprecated)	N.A. (absolute)

Lum. Classification System (LCS)

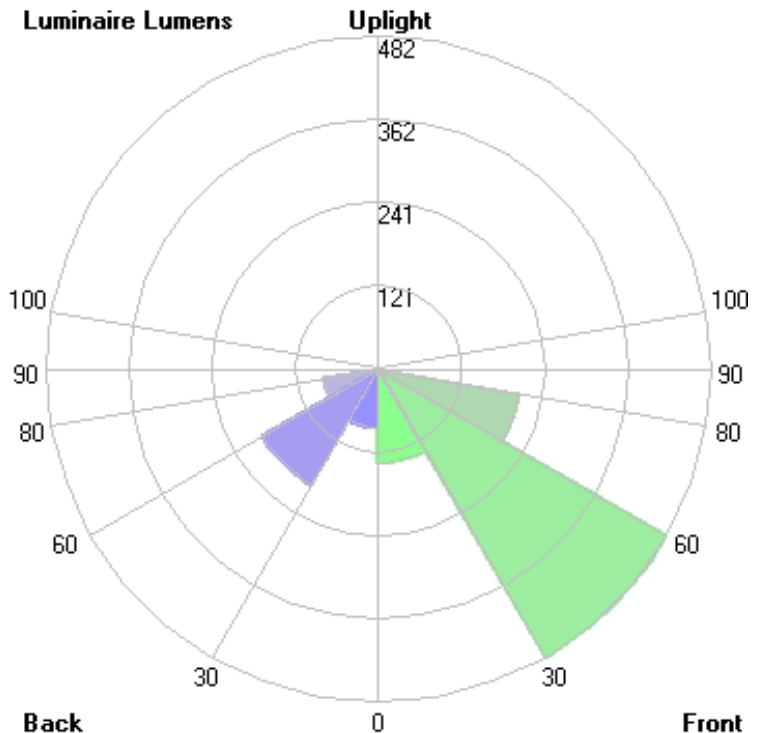
LCS Zone	Lumens	%Lamp	%Lum
FL (0-30)	136.0	N.A.	11.3
FM (30-60)	482.5	N.A.	40.2
FH (60-80)	208.1	N.A.	17.4
FVH(80-90)	8.4	N.A.	0.7
BL (0-30)	86.1	N.A.	7.2
BM (30-60)	194.2	N.A.	16.2
BH (60-80)	79.9	N.A.	6.7
BVH(80-90)	3.9	N.A.	0.3
UL (90-100)	0.0	N.A.	0.0
UH (100-180)	0.0	N.A.	0.0
Total	1199.1	N.A.	100.0

BUG Rating B0-U0-G0



Mounting Height = 12 ft.

Grid Spacing = 10 ft.



In the interest of product improvement, BEGA reserves the right to make technical changes without notice.

BEGA 1000 Bega Way, Carpinteria, CA 93013 (805)684-0533 Fax (805)566-9474 www.bega-us.com © Copyright BEGA-US 2019

8/13/2019